



1-2. only if ramp includes platform

1. Mount bridge transition (RA) on the platform (if included) otherwise mount one or two ramps



2. Mount support legs. Use the two outer holes Go on to step 4.



3. Mount the upper part (ÖL) in the slot on the upper half of the ramp . No Fixings needed.



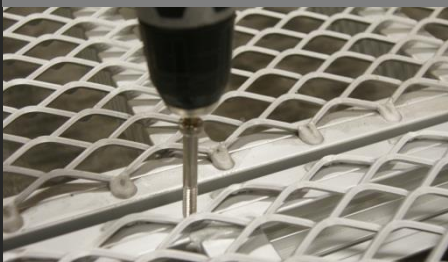
4. Mount support legs on both sides of the ramp. Place and level the legs and tighten the screws.



5. Mount the ramp attachment (KRL) in the slot at the lower part of the ramp (same when it comes...



6. Lay down the next ramp section. Repeat 4-5 until desired length



7. Use the pervading screw with associated nut and washer on the bottom.



8. If desired adjust the foot end on the legs. Up to +50mm only.



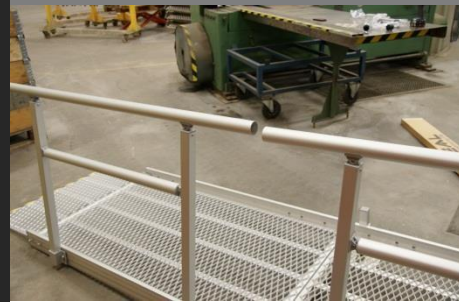
9. The bottom transition plate is fixed with 2 screws attached from the outside. No nuts required!



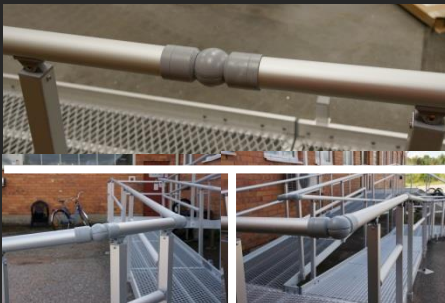
10. Mount the screws for the rail holders. Use the 4 inner holes. Place the rail holders/Stanchions.



11. Loosen the pre-attached screws in the poles and upper rail.



12. Mount the bottom and upper part of the handrail and tighten the screws.



13. Mount the rail link/connector.



14. Place and level the rail. Tighten the screws for the railholder, always tighten the left screw first.



15. Mount the two included screws to fix the rail connector



16. Finish by putting the plastic cap on the end part of the handrail.